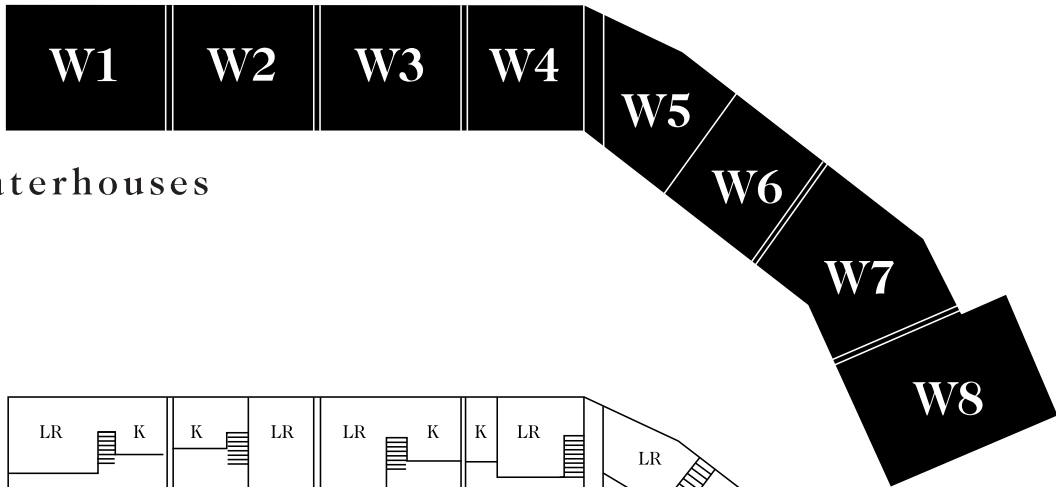


# THE WATERHOUSES

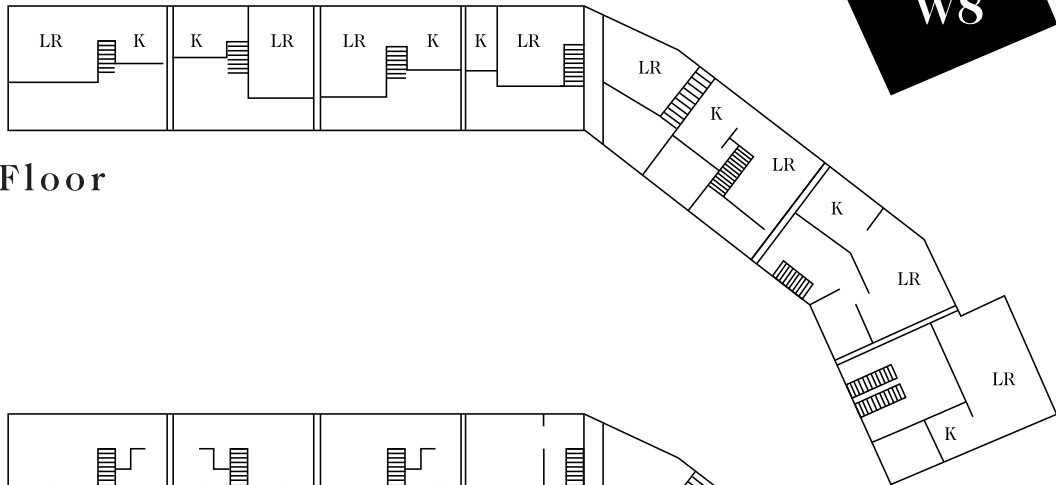
*at New Lanark*



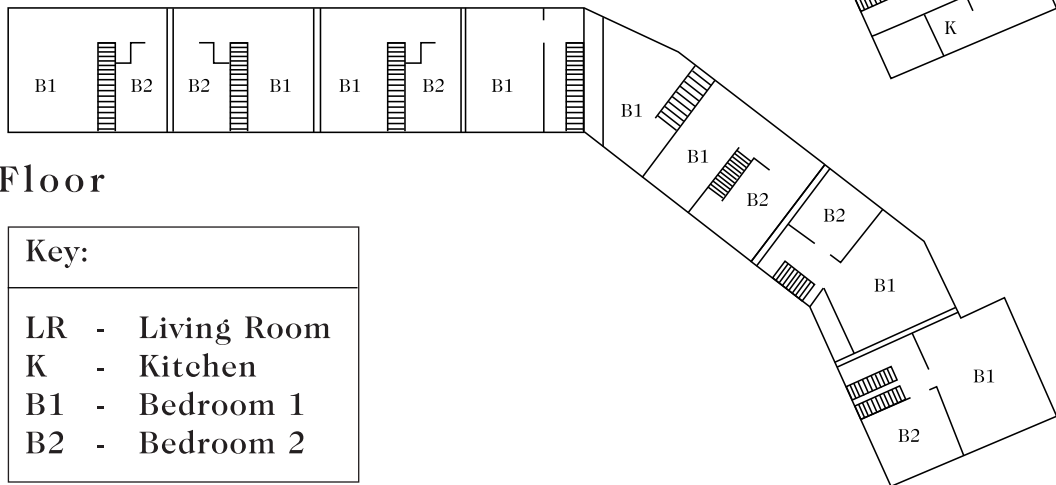
There are eight Waterhouse cottages at New Lanark, characterised by their individuality and outlook over the Clyde. They sit together, on the banks of the river, in the lane behind the New Lanark Mill Hotel. The drawings below are illustrative only but show the cottages in relation to each other and their main internal elements.



The Waterhouses



Upper Floor



Lower Floor

Key:	
LR	- Living Room
K	- Kitchen
B1	- Bedroom 1
B2	- Bedroom 2

*However long you stay - you won't want to go home.*